



Roxtec SBTB BG™ 관통 장비

접지 및 철저한 화재 방지를 위한 관

Roxtec SBTB BG™는 접지 및 철저한 화재 방지를 보장하는 양면 케이블 및 파이프 관통 장비입니다. 메탈 프레임은 용접으로 구조물에 장착합니다. Roxtec BG™ 씰링 모듈은 다양한 규격의 외장 및 금속 피복 케이블과 파이프에 적용할 수 있습니다. Roxtec EC 테스트 스틱을 사용하여 Roxtec BG™ 또는 ES 케이블 트랜짓의 전기 성능을 표시하는 데 사용됩니다.



- 예비 공간 포함 제공

제품 특징점



내화



방수



가스누출



전기관련

설치 구조



금속

장착 유형



용접

등급 및 인증

화재

- IMO 2010 FTP 코드에 따른 A등급
- IMO 2010 FTP Code + HC-화재 부하 곡선에 따른 H등급
- ISO 22899-1 및 OTI 95634에 따른 Jetfire

강도

- 가스: 2.5 Bar(일시적인)
- 물: 4 Bar(일시적인)

지원

- Bonding과 Grounding

프레임 치수

mm/kg

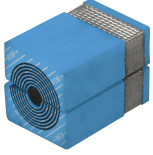
아래의 프레임 변화는 제한된 선택입니다. 프레임 및 구성의 전체 범위를 보려면 [roxtec.com](https://www.roxtec.com)을 방문하십시오.

구성	프레임 입구	모듈설치공간	외부 치수 WxHxD	홀 치수 w x h	무게	Art. 번호
SBTB 6x1 ALU	1	120 x 180	140.5 x 238 x 200	143(+1/-1) x 240(+1/-1)	4	105587
SBTB 6x2 ALU	2	120 x 180	271 x 238 x 200	273(+1/-1) x 240(+1/-1)	5.8	5SBT000007020
SBTB 6x3 ALU	3	120 x 180	401.5 x 238 x 200	404(+1/-1) x 240(+1/-1)	7.8	105588
SBTB 6x1 PRIMED	1	120 x 180	140.5 x 238 x 200	143(+1/-1) x 240(+1/-1)	10.5	5S00000004391
SBTB 6x2 PRIMED	2	120 x 180	271 x 238 x 200	273(+1/-1) x 240(+1/-1)	17	5S00000004503
SBTB 6x3 PRIMED	3	120 x 180	401.5 x 238 x 200	404(+1/-1) x 240(+1/-1)	22.3	5S00000004393
SBTB 6x1 AISI316	1	120 x 180	140.5 x 238 x 200	143(+1/-1) x 240(+1/-1)	10.8	5SBT000002149
SBTB 6x2 AISI316	2	120 x 180	271 x 238 x 200	273(+1/-1) x 240(+1/-1)	16.9	5SBT000004538
SBTB 6x3 AISI316	3	120 x 180	401.5 x 238 x 200	404(+1/-1) x 240(+1/-1)	22.8	5SBTB00010248



씰링 컴포넌트 데이터

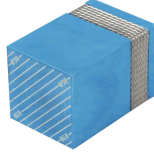
씰링 컴포넌트



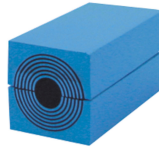
RM BG™ 모듈(Multidiam)



윤활제



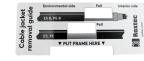
RM BG™ 솔리드



RM 모듈(Mult idiameter™)



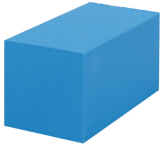
Wedge 및 We



액세서리 ES 및



홀더 도구



RM 솔리드 모듈



스테인플레이트



BG™ 씰링 키트



용접 도구

자세한 내용은 [roxtec.com](https://www.roxtec.com)을 방문하십시오.

The product information provided by Roxtec does not release the purchaser of the Roxtec system, or part thereof, from the obligation to independently determine the suitability of the products for the intended process, installation and/or use. Roxtec gives no guarantee for the Roxtec system or any part thereof and assumes no liability for any loss or damage whatsoever, whether direct, indirect, consequential, loss of profit or otherwise, occurred or caused by the Roxtec systems or installations containing components not manufactured by an authorized manufacturer and/or occurred or caused by the use of the Roxtec system in a manner or for an application other than for which the Roxtec system was designed or intended. Roxtec expressly excludes any implied warranties of merchantability and fitness for a particular purpose and all other express or implied representations and warranties provided by statute or common law. User determines suitability of the Roxtec system for intended use and assumes all risk and liability in connection therewith. In no event shall Roxtec be liable for indirect, consequential, punitive, special, exemplary or incidental damages or losses. The Roxtec products are offered and sold in accordance with the conditions of the Roxtec General Terms of Sales. The latest version of the Roxtec General Terms of Sales can be downloaded from <https://www.roxtec.com/en/about-us/about-roxtec/general-terms-of-sales/> We reserve the right to make changes to the product and technical information without further notice. Any errors in print or entry are no claims for indemnity. The content of this publication is the property of Roxtec International AB and is protected by copyright. This document was generated on: 2024-04-26